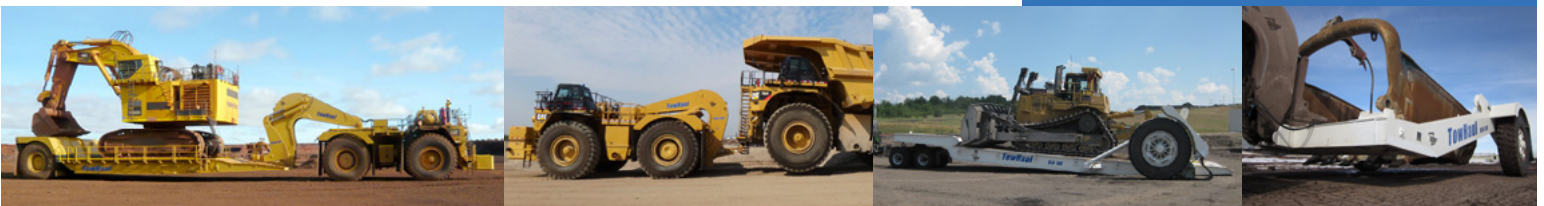


# COMPANY PROFILE



**Streamlined Towing and Hauling:**  
MADE FOR TOUGH SINCE 1977



OUR CORE VALUES: **COMMUNITY | INTEGRITY | TEAM | COMMITMENT**

# COMPANY PROFILE



## COMPANY STATISTICS

- Doing Business Since 1977
- Over 300 units in 27+ Countries
- 50,000 sf Area of Operation, Montana USA
- Global Contract Manufacturing
- Business: 80% International / 20% Domestic
- Models Ranging from 120 to 600 Tons

## WHO WE ARE

TowHaul's journey began with the visionary leadership of our founder, Frank Smith, who aimed to revolutionize the mineral extraction industry by manufacturing the most reliable, efficient, and adaptable off-road equipment. Driven by a passion to create robust and versatile products, Frank significantly enhanced the functionality of towing and hauling equipment.

Today, we proudly carry forward Frank's legacy, developing innovative solutions for open-pit mines worldwide. Our equipment excels in challenging conditions, ensuring reliability and efficiency across six continents. Despite our global reach, we maintain a strong connection to our roots, with our Montana home office serving as a hub for support and expertise.



## COMPANY VISION

We are a company of integrity. Always. We are an industry leader in providing clients with innovative and effective products, services, and support. We operate with honest respect for our employees, customers, and the communities in which we serve.



Lowboy Trailer Patented in 1997

Local Volunteering - Manufacturing Day

# DISCOVER OUR STORY



## INNOVATION

At TowHaul, we make intentional engineering decisions based on our customers' needs. Finding solutions to keep your fleet moving drives us every day to create and innovate. Our goal is to keep those solutions simple while addressing current and future needs.

## PRODUCT LINE

Our presales Engineering Team will review your equipment loading profiles to ensure that your TowHaul equipment is precisely matched with your needs.

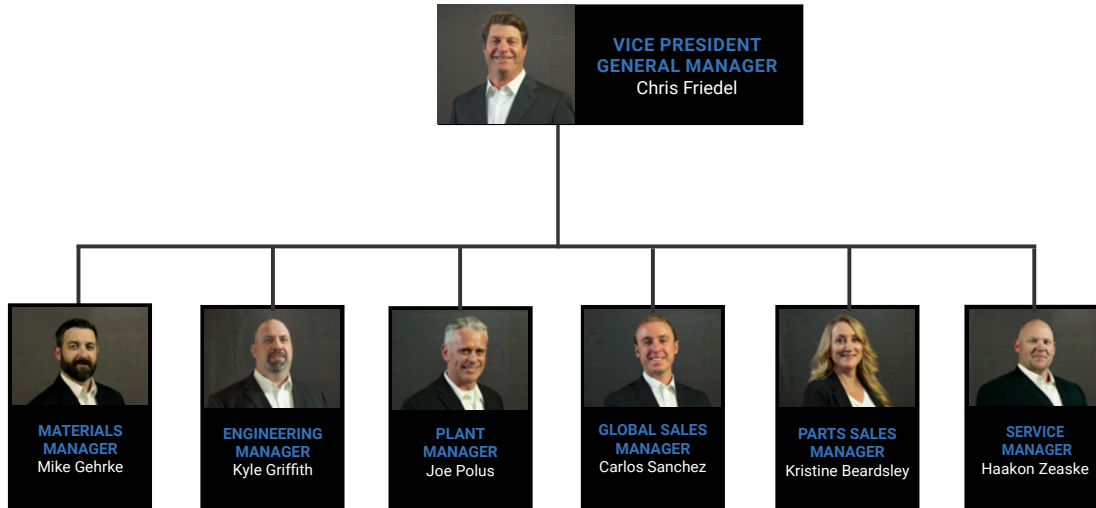
- Lowboy
- Multi-purpose Gooseneck
- Rear-loading Lowboy
- Dragline Bucket Transporter

## SERVICES

- Global Sales and Marketing
- Engineering
- Full Manufacturing
  - Certified Fabrication
  - Skilled & Trained Assembly
- Product Support and Parts Distribution
- Field Service and Training
- Global Freight




# MEET THE TEAM



## IN IT FOR THE LONG HAUL

A Global Company Based In Belgrade Montana

TowHaul is strategically situated in Montana, with its parent company, Ground Force Worldwide, located just across the border in Northern Idaho. This close proximity fosters strategic synergies that are driving TowHaul to new heights. Each day presents new opportunities to enhance and improve our customer experiences. We embrace these challenges as a team and look forward to continuing to deliver innovative solutions to our valued customers worldwide.

 340 Andrea Drive  
Belgrade, Montana 59714 U.S.A.

 [TowHaul@towhaul.com](mailto:TowHaul@towhaul.com)

 +1 (406) 388-3424

 [towhaul.com](http://towhaul.com)