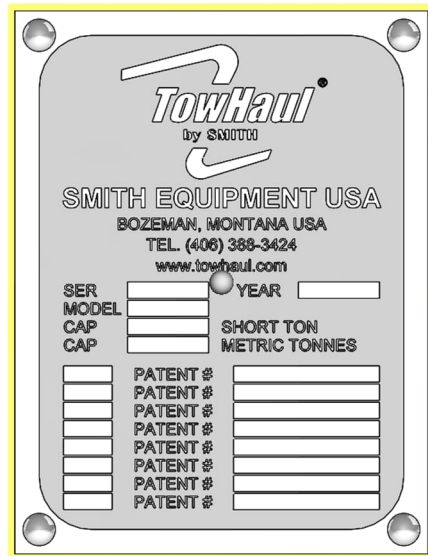




DECREASE YOUR COSTS

INCREASE YOUR MOBILITY®

## TOWHAUL SERIAL PLATE LOCATION



CONFIDENTIAL INFORMATION - DO NOT CIRCULATE

BY: TANNER EMERICK - SERVICE ENGINEER

CREATED DATE: FEBRUARY 18, 2021

MODIFIED: MAY 9, 2022

These Instructions and Drawings are proprietary and confidential. These are provided for one-time use only and may be subject to change.

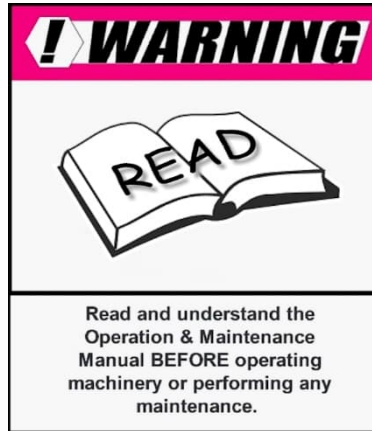
This information is being provided as a guide to be used within the mine's equipment repair and operations policies.





**DECREASE YOUR COSTS**


**INCREASE YOUR MOBILITY®**


The prime mover, equipment and components are replications for example only and may look different than your TowHaul unit.



Read and understand the Operation & Maintenance Manual **BEFORE** operating machinery or performing any maintenance.

(!) NOTE:	Note: An operation, condition, or information worth noting.
 CAUTION	Caution: A procedure or condition which, if not observed, could result in damage to equipment.
 WARNING	Warning: A procedure or condition which, if not observed, will result in damage to equipment and/or personal injury or death.

 **WARNING** Unsafe use of this machine may cause serious injury or death. Operators and maintenance personnel must read and understand this manual before operating or maintaining this machine. This manual should be kept in the machine for reference, and periodically reviewed by all personnel who will come into contact with it.

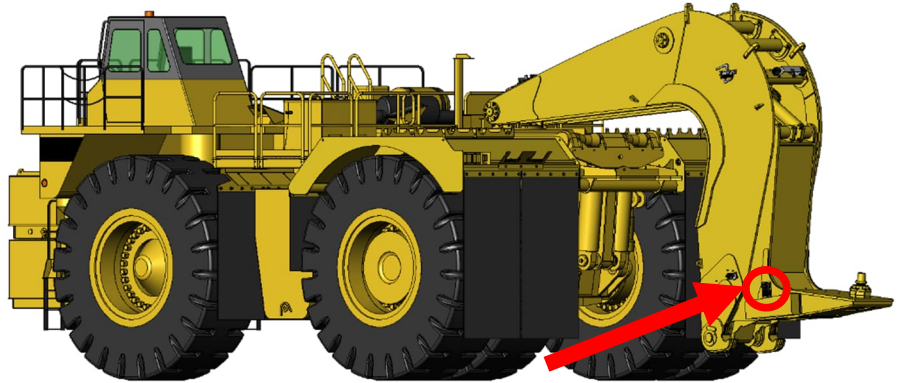
 **WARNING** TowHaul Corporation strongly recommends against the use of Non-OEM replacement parts in all systems of all TowHaul Equipment. Replacement parts manufactured and supplied by unauthorized sources may not be designed, manufactured or assembled to TowHaul's design specifications. Use of Non-OEM parts places full responsibility for the safe performance of the TowHaul Equipment on the user. TowHaul shall not accept responsibility for the failure of Non-OEM parts in its equipment, including any damages or personal injury or death resulting from such use.

Printing Format

This document contains technical drawings formatted to be printed on both 8 ½" x 11" (size A) and 11" x 17" (Size B) paper. The correct size paper is noted in the lower right-hand corner title block of each drawing.

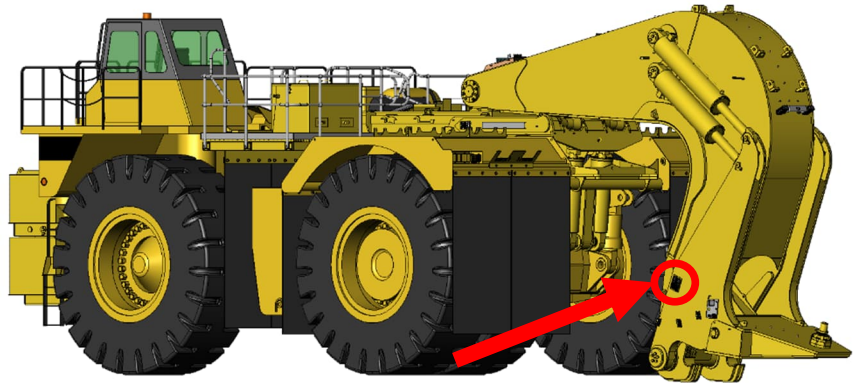
**RGS GOOSENECK**

- Serial Plate is located on the left side (LH) side of the Toe Assembly



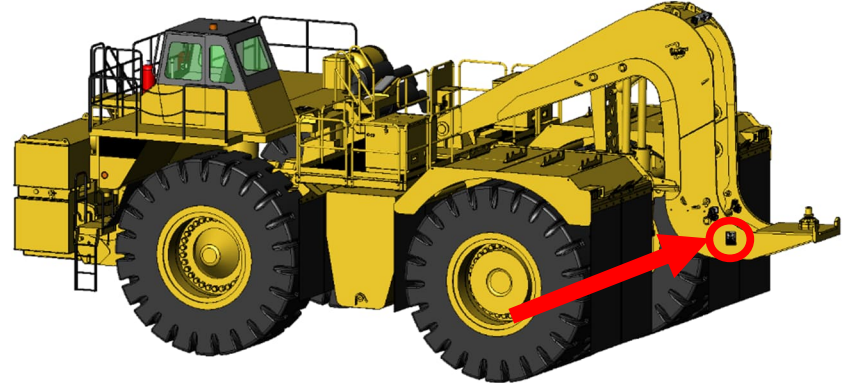
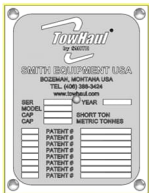
**RGSO GOOSENECK**

- Serial Plate is located on the left side (LH) of the Toe Arm Assembly



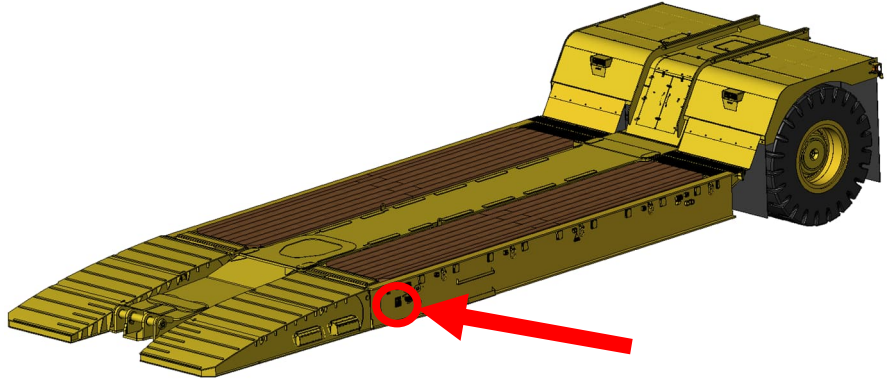
**TOWHOOK**

- Serial Plate is located on the left hand (LH) side of the TowHook Assembly



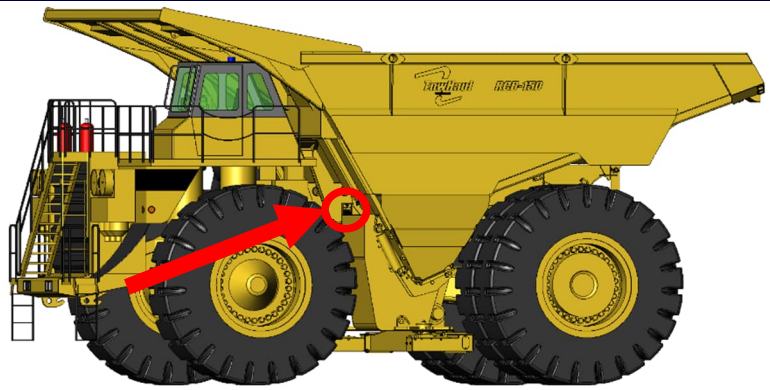
**LOWBOY TRAILER**

- Serial Plate is located on the left hand (LH) Load Wing by the Load Ramp connection



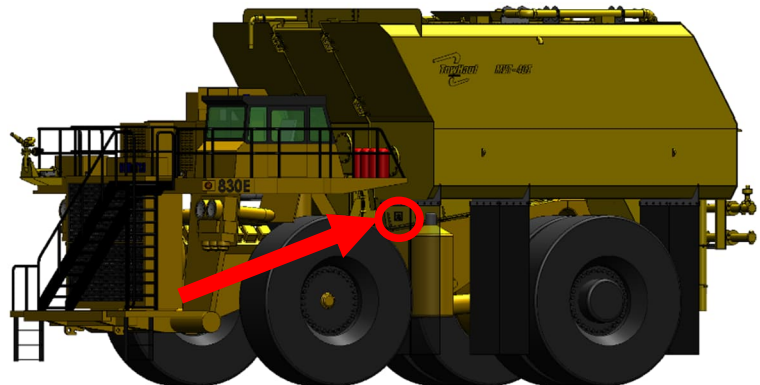
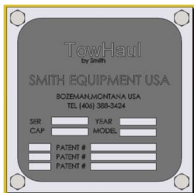
**RCB**

- Serial Plate Is located on the Outside face of the left hand (LH) Body Frame Rail behind the fuel tank



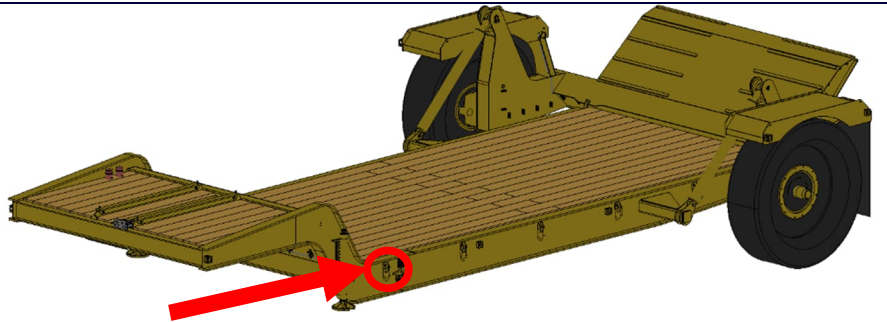
**MVT WATER HAULER**

- Serial Plate Is located on the Outside face of the left hand (LH) Body Frame Rail behind the fuel tank



**REAR LOADING TRAILER**

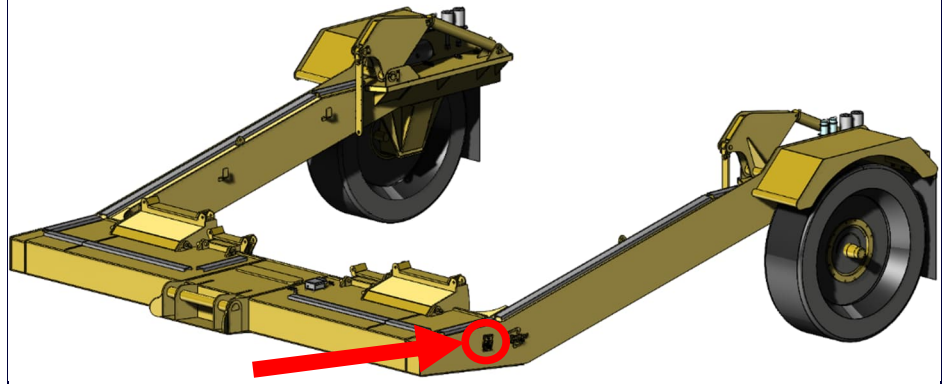
- Serial Plate is located on the left hand (LH) side of the trailer towards the front





**BUCKET TRANSPORTER**

- Serial Plate is located on the left hand (LH) side of the trailer towards the front







**DECREASE YOUR COSTS**

---

***INCREASE YOUR MOBILITY®***